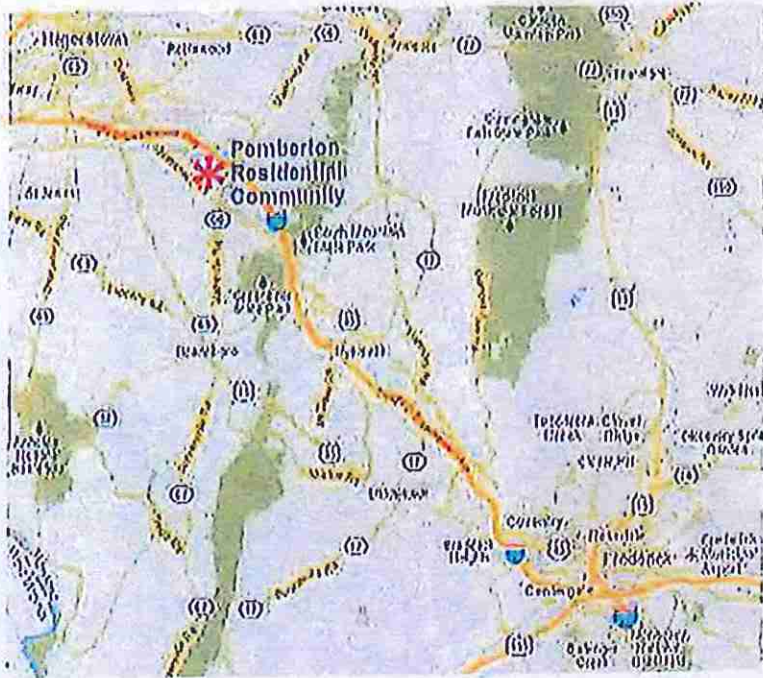


# PEMBERTON RESIDENTIAL COMMUNITY

PHASE II, HAGERSTOWN, MD 21740

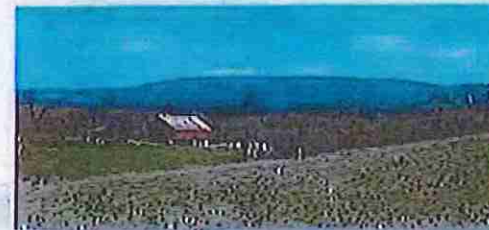


### DESCRIPTION:

Beautiful mountain-view residential lots. Located southeast of Hagerstown in Washington County, MD.

### AVAILABILITY:

Pemberton Phase II:  
15 lots still available



Above: Lots located within rolling landscapes



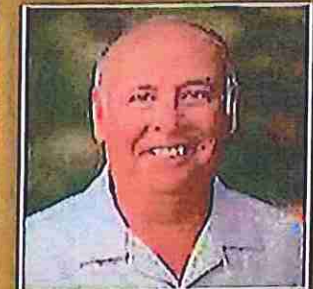
Left: Hiking views from South Mountain, MD range

Below: Historic Doub's Mill in Beaver Creek, MD

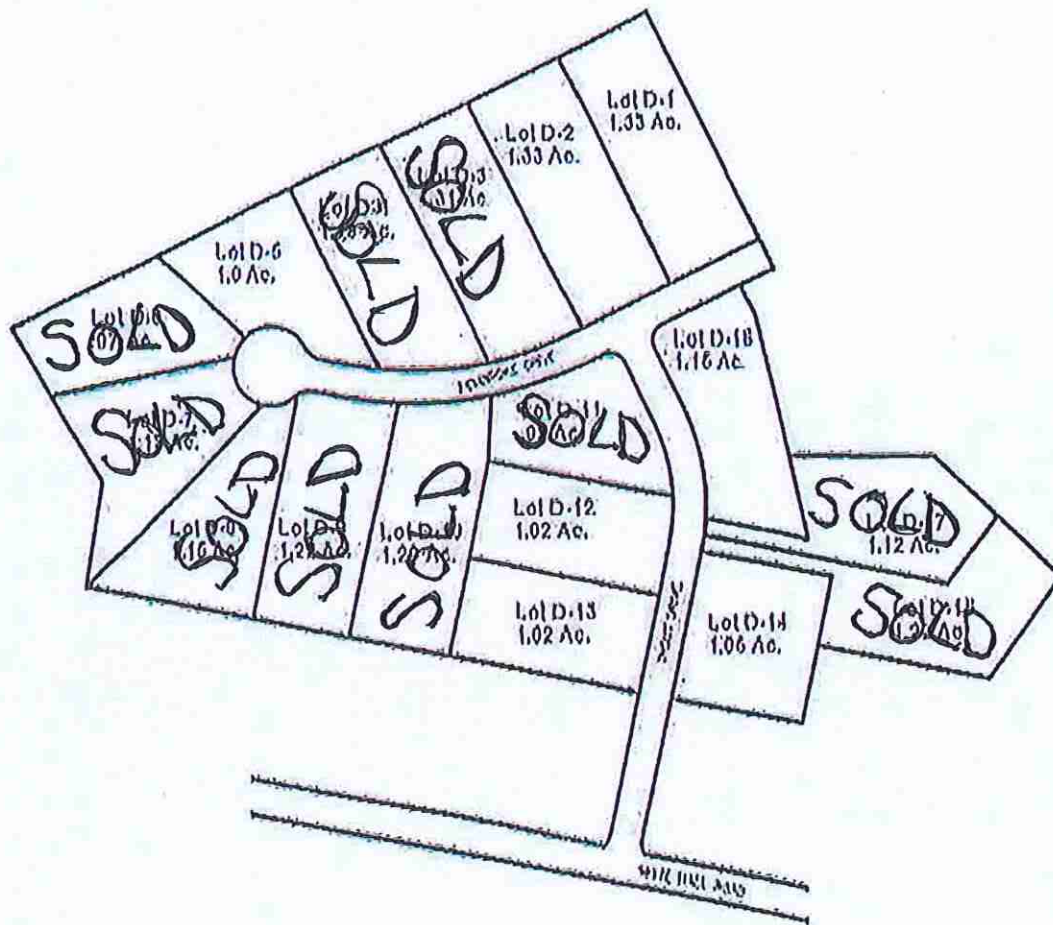


The Pemberton Residential Community offers protective covenants within a charming historic area. It is near Beaver Creek in Washington County, MD. Beaver Creek is located southeast of Hagerstown and north of Boonsboro near U.S. Route 40 and Maryland Route 66. The community is officially included in the Hagerstown Metropolitan Area and within the Greenbrier Elementary School and Boonsboro Middle and High School Districts.

The area is known for its picturesque countryside with rolling hills and a backdrop of South Mountain. South Mountain is the northern extension of the Blue Ridge Mountain range in Maryland and Pennsylvania. Although Beaver Creek is home to several historic landmarks such as Beaver Creek School and the Doub's Mill Historic District, most of the community's development has occurred since the 1990s, with new and upscale housing for professionals from Hagerstown and from the Washington, D.C. Metro area. The location offers easy access to Interstate-70 for commutes to Frederick, MD, Baltimore, MD and the greater Washington, DC metro area.



13621 Crayton Blvd  
Hagerstown, MD  
Phone: 301-991-3486  
casal@osimdc.com



Choose your style of home: Brick,  
 Stone, or English Tudor. All utility  
 wires are underground. Standard  
 features and specifications for  
 subdivision available upon request.